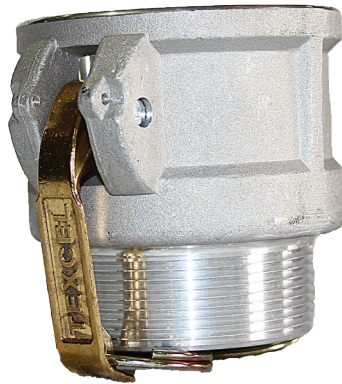


CAM & GROOVE COUPLING LINE

Type B Coupler

Aluminum Constructed Cam and Groove type B female coupler by male NPT. Also available in stainless steel and brass.



Hose Diameter	Part Number	Lbs./Each
¾"	.75-B-ALUM-SP	0.26
1"	1.0-B-ALUM-SP	0.44
1-¼"	1.25-B-ALUM-SP	0.66
1-½"	1.5-B-ALUM-SP	0.69
2"	2.0-B-ALUM-SP	0.85
2-½"	2.5-B-ALUM-SP	1
3"	3.0-B-ALUM-SP	1.65
4"	4.0-B-ALUM-SP	2.26
5"	5.0-B-ALUM-SP	2.64
6"	6.0-B-ALUM-SP	4.37
8"	8.0-B-ALUM-SP	15.66
¾"	.75-B-BRASS-SP	0.41
1"	1.0-B-BRASS-SP	0.64
1-¼"	1.25-B-BRASS-SP	1.1
1-½"	1.5-B-BRASS-SP	1.23
2"	2.0-B-BRASS-SP	1.43
2-½"	2.5-B-BRASS-SP	1.98
3"	3.0-B-BRASS-SP	2.88
4"	4.0-B-BRASS-SP	4.08